



AgriKids Webinar Quiz - Senior

Now that you've seen the webinar, can how many of the questions below can you answer?

1. Draw the sign for the following statements:

- a) You must wear boots
- b) Electric fence
- c) Moving machinery
- d) Exit this way
- e) No entry
- f) Chemicals
- g) You must wear eye protection

2. Horses

a. Look at these horses, what are their ears telling us about how they feel?



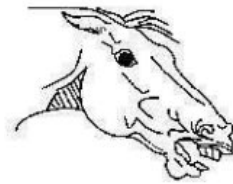
Forward ears



Twisting ears



Drooping ears



Pinned back ears

b. Where is it safe and unsafe to approach a horse?

Give a reason for your answer.

3. Bulls and Cows

a. What are the common signs of an aggressive bull (circle your answers)

Grazing Tossing head Blinking Scraping ground Bellowing

b. How can farmers stay safe when handling bulls?

c. When and why might a cow be considered highly dangerous?

d. What can farmers do to make sure they are safe when dealing with such a cow?

4. Slurry:

a. What is slurry made of and why do farmers use it?

b. Mixing slurry is also called: A- - TA- - - -

c. When mixing slurry the first _____ is the most dangerous. (Circle the right answer)

30 Seconds 30 Minutes 30 Days

Give a reason for your answer:

- d. When mixing slurry farmers should:
 - i. Stand beside the agitator looking in
 - ii. Keep away from the area for up to one hour
 - iii. Stand beside the tank to make sure agitator is working

5. Tractors

Write down your answers to the following:

- a. Why can tractors be so dangerous?
- b. What can farmers do to be safer when using them and how should everyone behave around tractors?
- c. What is significant about these ages when talking about tractors: 7yrs, 14yrs and 16yrs?
- d. Tractor blind spots: Look at this picture and draw your own version. Explain where the tractor blind spot is?
- e. Where else would there be a tractor blind spot?



6. Quad Quiz

- a. To operate a quad on a farm you must be: 6 16 60
- b. What does ATV stand for? _____
- c. Can farmers carry passengers on a quad: _____
 Give a reason for your answer:

- d. What PPE should farmers wear when using a quad?

